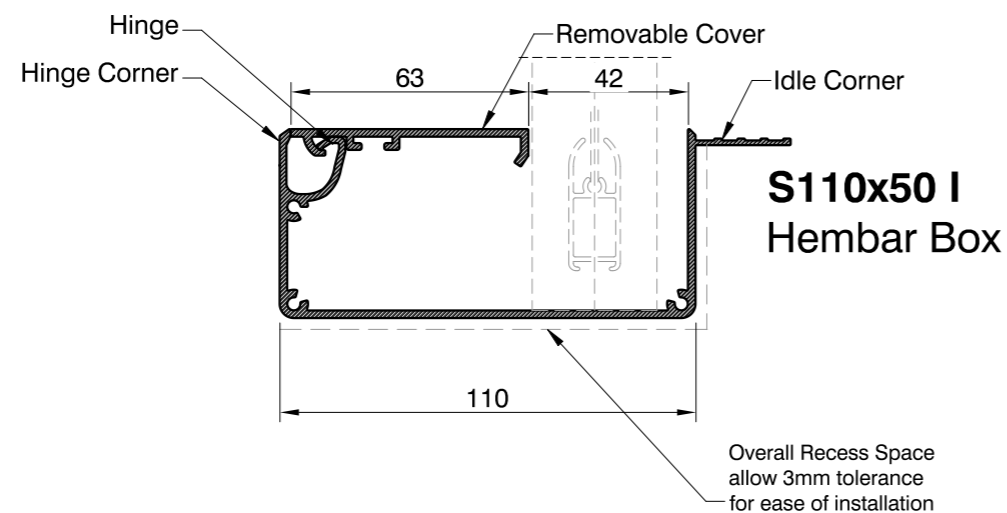
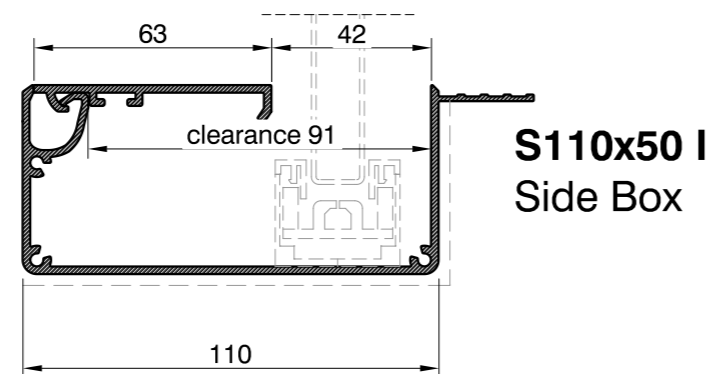
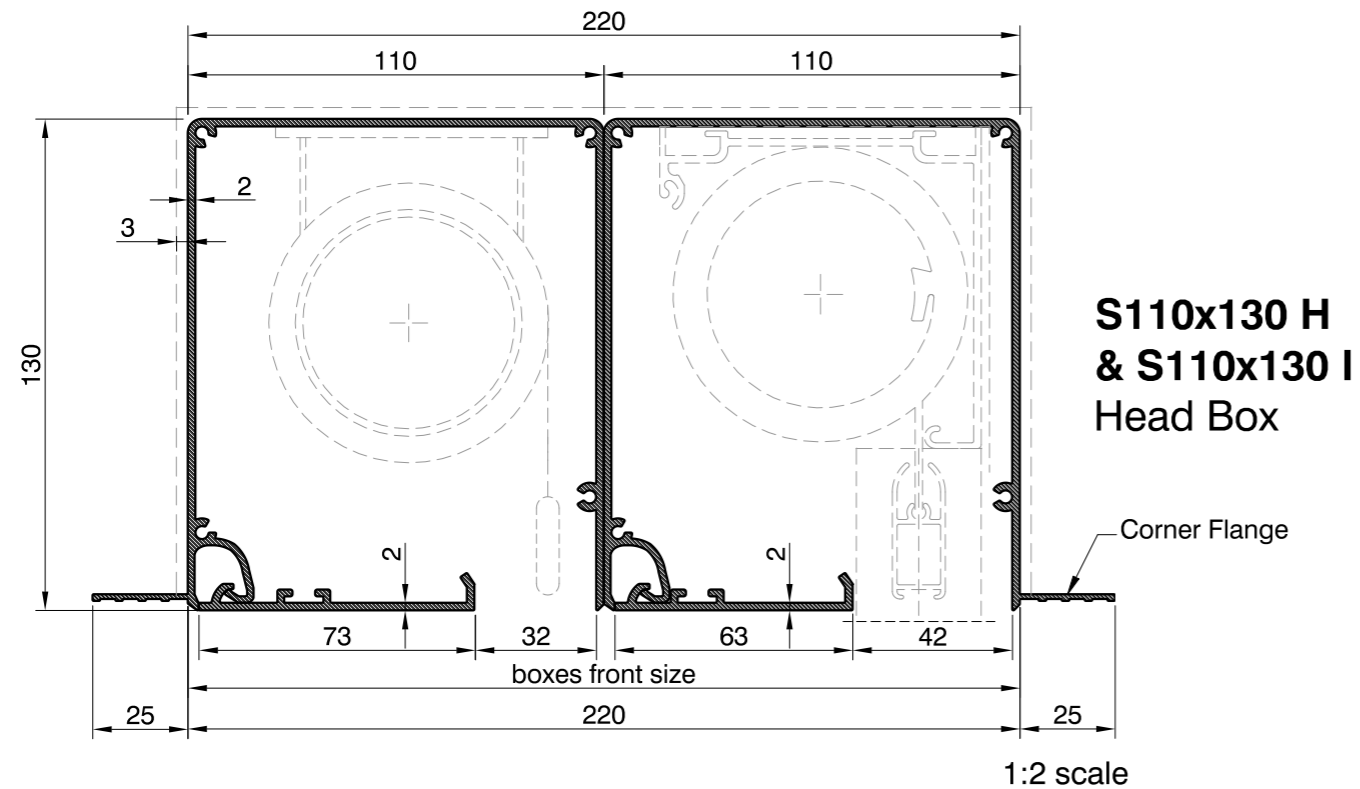
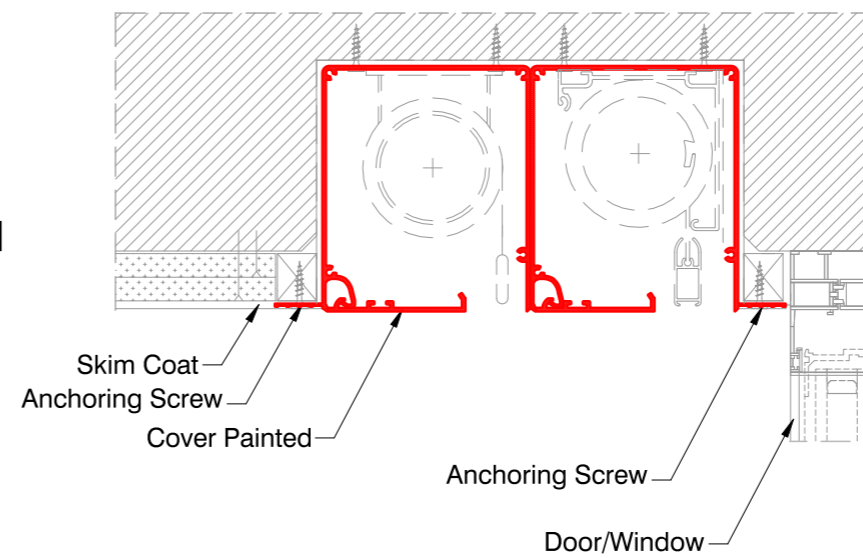


Double Blindspace® S110x130 & S110x50 for Large Roller Blind and SHY 85/60 ZIP 240v



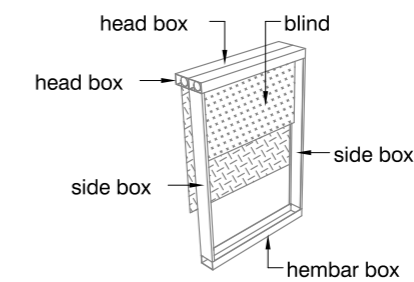
SAMPLE INSTALLATION DETAIL

INSTALLATION NOTE:
Make sure there is space for window/door handles.
Boxes and blinds can also be mirrored in vertical plane for opening towards the room.



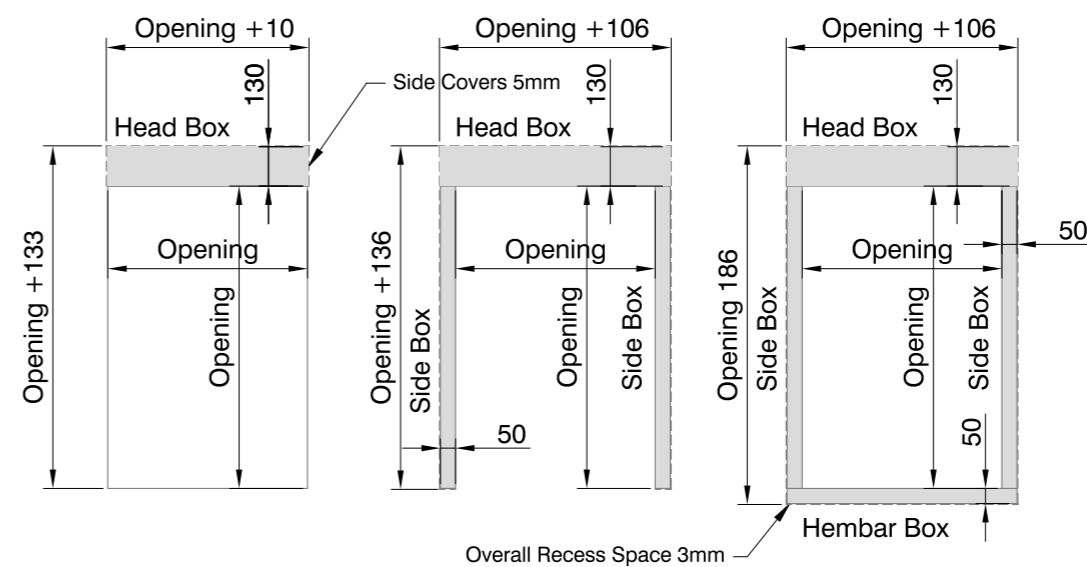
PRODUCT REFERENCE

product series → flange location
Blindspace S110x130 H
box front size → depth of the box

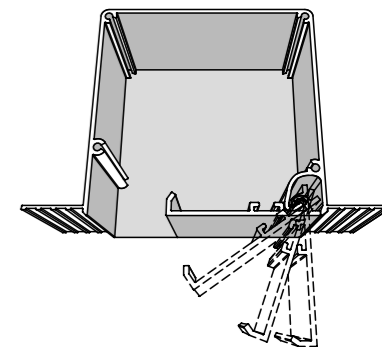


Top down configuration of blinds is shown.
Bottom up configuration is also possible.
For bottom up configuration the frame layout should be mirrored in horizontal plane.

FRAME LAYOUT OPTIONS



Product	Blindspace S110x130
Description	Recessed aluminium boxes and covers designed to conceal window blinds.
Material	Anodized Aluminium, grade: EN 6063 T6
Finishes	- Unfinished for site painting - Primed for site painting - Pre-finished to RAL colour
Blind sizes	Blind Sizes to fit inside the box: Exact size depending on rollers combination, fabric and hembar selection. Large Standard Roller Blind and SHY 85/60 ZIP 240v 36mm Opening Width max:2900mm Opening Height max: 3000mm
Installation	Boxes should be fixed on both sides. The finished plaster level should be flush with chamfered edge. Anchoring countersink screws through skim coat flanges are recommended.
Drawing	Standard Blindspace Boxes S110x130 for Window Blinds
Item name	S110x130, S110x50
Date	November, 2019
Notes	Dimensions in mm Do not scale from drawing
Drawn by	M. Kozak, B. Dzieza
Approved	A. Sundelin
Revision	R-0: first issue



Print date	2019-11-7
Print file	blindspace s110x130 for windows with 1 std roller and shy 85-60 zip 36 v03.dwg
Page size	ISO A3 420x297
Remarks	RWE